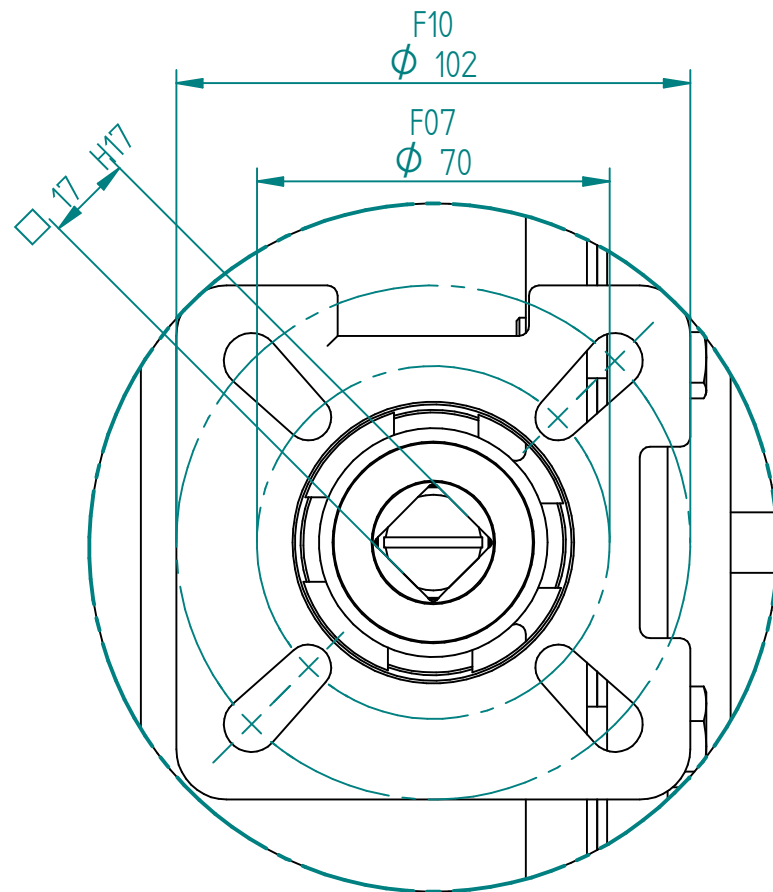
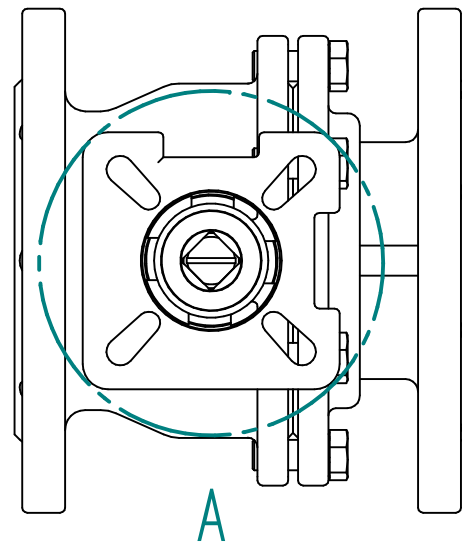
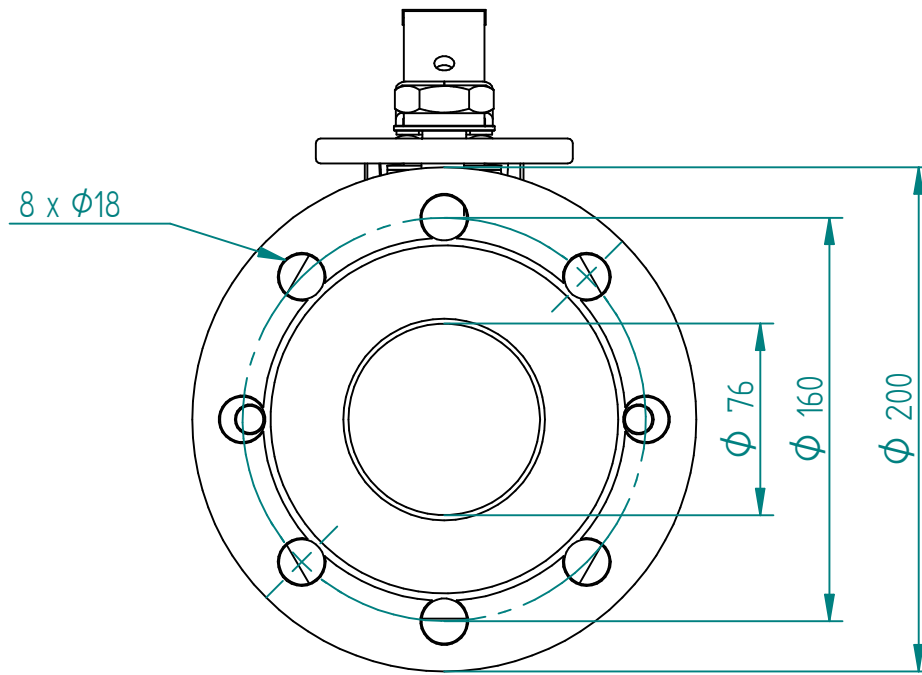
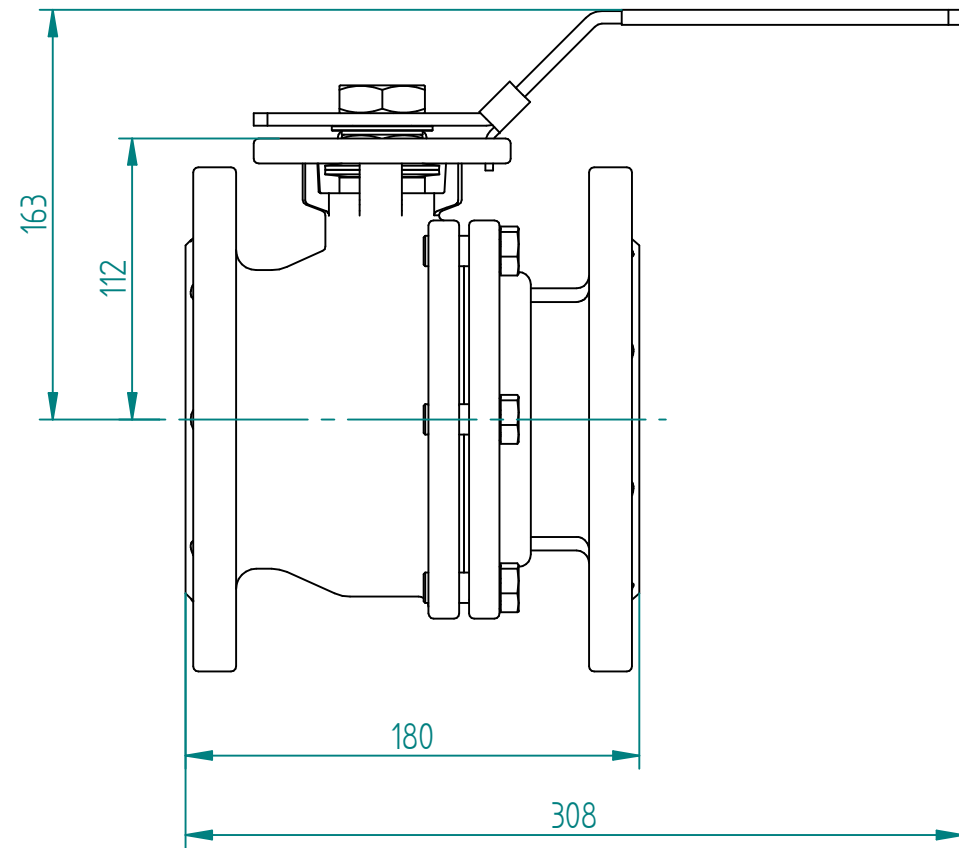
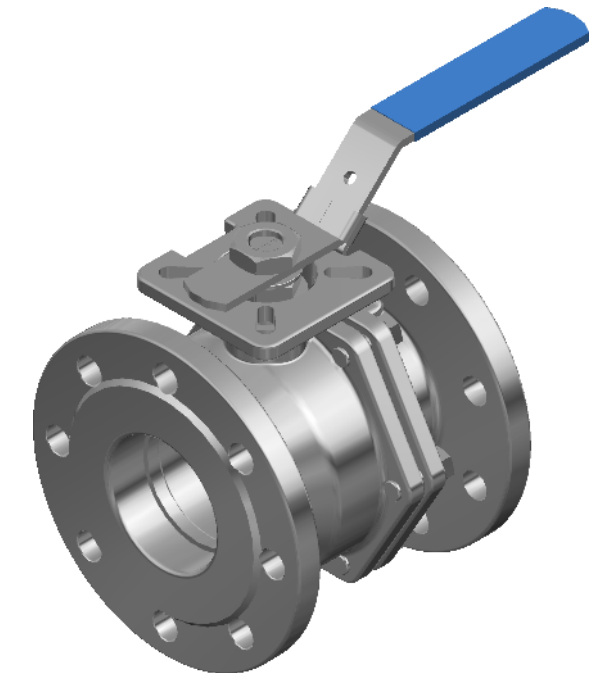


Pos	Part name	Material
1	Body	1.4408 (CF8M)
2	Cap	1.4408 (CF8M)
3	Ball	SS316
4	Ball seat	PTFE
5	Stem	SS316
6	Stem packing	PTFE
7	O-ring	VITON
8	V-Packing	PTFE
9	Gland	SS304
10	Washer	SS301
11	Nut	SS304
12	Thrust washer	SS304
13	Washer	SS304
14	Handle	SS304
15	Plastic cover	Plastic
16	Locking	SS304
17	Body gasket	PTFE
18	Bolt	SS304



DETAIL A



TITLE 2PC BALL VALVE FLANGED SS316, DN80, V-PACKING
PN16 FLANGE CONNECTION, WITH SQUARE SPINDLE
TORQUE 75NM F07/F10 17MM

	NAME	DATE	SIZE	DWG NO
DRAWN	RAGA	19.06.2024	A3	QIF-100-002-0080
CHECKED	TOCO	dd.mm.yyyy	FILE NAME: QIF-100-002-0080C.dft	
ENG APPR	TOCO	dd.mm.yyyy	SCALE: 1:3	REV: 00
MGR APPR	TOCO	dd.mm.yyyy	WEIGHT: 18.9 kg	SHEET: 1 OF 1

UNLESS OTHERWISE SPECIFIED
DIMENSIONS ARE IN MILLIMETERS
AND TOLERANCES ARE +/-0,5

REV	DESCRIPTION	DATE	APPROVED
REVISION HISTORY			