

# SV300 Namur Mounted Solenoid valve SV400 Pipe Mounted Solenoid valve

# NUTORK®



## Specification

Model	SV310 / 410	SV320 / 420
Medium	Air	
Operating	Internal Piloted	
Valve Type	5 Port 2 Position	
Orifice Size	35mm <sup>2</sup>	
Port Size	Inlet & Exhaust Port: PF1/4"	
Lubrication	Not Required	
Pressure Range	0.15 ~ 0.8 Mpa	
Proof Pressure	12bar	
Temp. Range	-5 ~ 60 (23 ~ 140°F)	
Voltage Range	-15% ~ 10%	
Power Consumption	AC=2.0~3.5VA, DC=2.5W	
Insulation Class	Class F	
Protection	IP65(DIN40050)	
Connector	Socket with Plug	
Max Frequency	5 cycle/second	

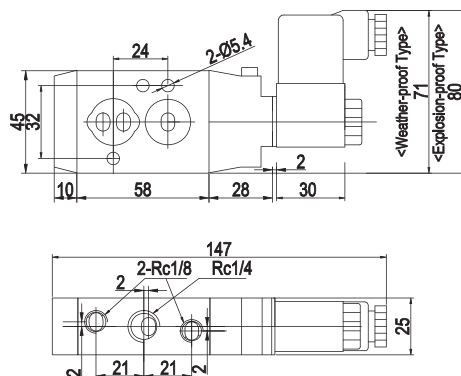
Note: Port thread PT and NPT are also available.

Set 5/2 or 3/2 function simply by turning the rotary sealing O-ring 180°.

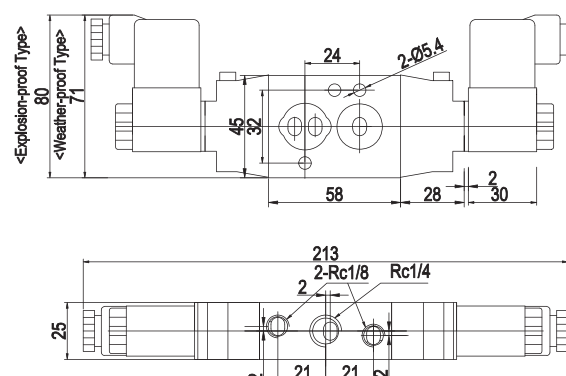
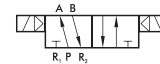
## Specification of Explosion-Proof Type

Protection	EExmIIT4
Voltage Range	±10%
Power Consumption	AC = 4.4VA, DC = 5W
Insulation Class	Class F

### SV310-02



### SV320-02

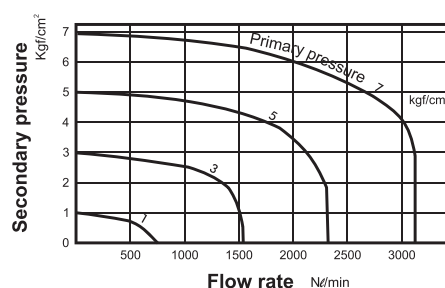


## Order Information:

<b>SV</b>	-	<b>X</b>	-	<b>X</b>	-	<b>X</b>	-	<b>X</b>	-	<b>X</b>
Product Model										
Type:										
310: Single Coil										
320: Double Coil										
410: Single Coil										
420: Double Coil										
Port Size:										
02: 1/4"										
04: 1/2"										
Coil Enclosure:										
0: Standard										
L: LED indicator										
A: ATEX Ex-Proof										
E: Ex-Proof										
Air Conn.:										
0: G(BSP)										
1: NPT										
Voltage:										
DC024:24VDC										
AC024:24VAC										
AC110:110VAC										
AC120:120VAC										
AC220:220VAC										
AC230:230VAC										

Note: SV300 series is Namur mounted type, only available at 1/4"  
SV400 series is pipe mounted type

## Flow features:



Oslo ☎ 22 21 51 00 | Bergen ☎ 55 39 32 00 | Arendal ☎ 37 06 11 40

✉ post@jsc.no | 🏠 www.jsc.no

