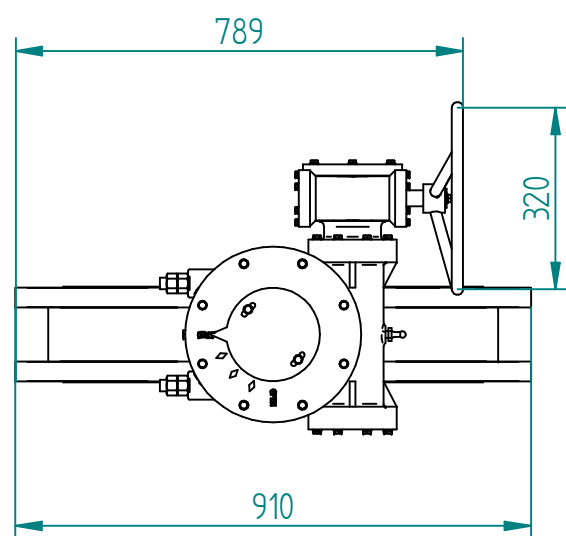
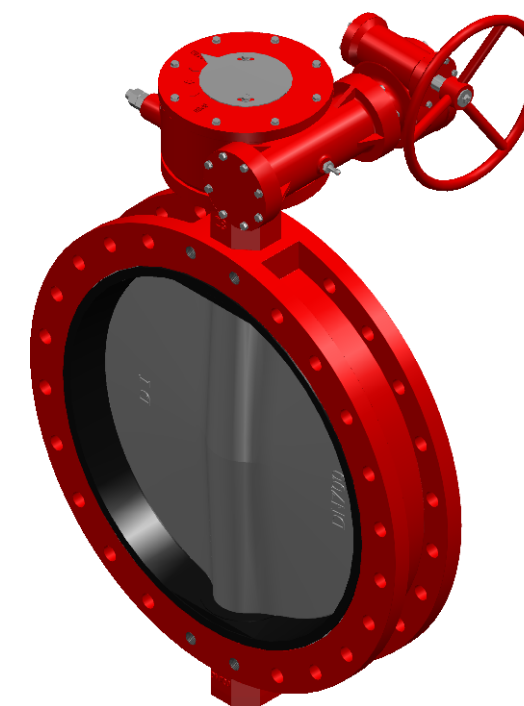


SECTION A-A



POS	Item number	Material	Quantity
1	Body	Iron:0.7040 , EN-GJS-400-15 Ceramic	1
2	Long-Bushing	PTFE (Polytetrafluoroethylene)	2
3	Short-Bushing	Galvanized steel	2
4	O-Ring	NBR (Nitrile Butadiene Rubber)	1
5	Seat	EPDM (Ethylene Propylene Diene Monomer)	1
6	Support-Ring	Aluminum, 1060	1
7	Disc	Iron:0.7040 , EN-GJS-400-15 Ceramic	1
8	Bottom-Shaft	Stainless Steel, 416	1
9	Top-Shaft	Stainless Steel, 416	1
10	Stop-Cover	Galvanized steel	1
11	Stop-Cover-Screw	Galvanized steel	4
12	Ball-Bearing		1
13	End-Cap	Iron:0.7040 , EN-GJS-400-15	1
14	O-Ring-Bottom	NBR (Nitrile Butadiene Rubber)	1
15	End-Cap-Screw	Galvanized steel	4
16	End-Cap-Washer	Galvanized steel	4
17	End-Cap-Lock-Washer	Galvanized steel	4
18	QIF-320-010-8000		1



		NAME	DATE	SIZE	DWG NO
DRAWN	AXJO	12.05.2026	<b>A3</b>	AMX-110-062-0700	
CHECKED	TOCO	dd.mm.yyyy	FILE NAME: AMX-110-062-0700.dft		
ENG APPR	TOCO	dd.mm.yyyy	SCALE: 1:13,33	REV: 00	
MGR APPR	TOCO	dd.mm.yyyy	WEIGHT: Link?:R -1	SHEET: 1 OF 1	

UNLESS OTHERWISE SPECIFIED DIMENSIONS ARE IN MILLIMETERS AND TOLERANCES ARE +/-0,5

REV	DESCRIPTION	DATE	APPROVED
00	First issue	12.05.2026	AXJO
REVISION HISTORY			

TITLE GA-Drawing and Parts List